

# BC160 BX160 系列 BC160 BX160 Series



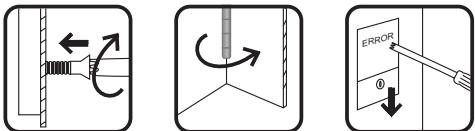
BC161

BC164



BX161

BX164



## 特点和规格 Feature & Specification

- 不锈钢面板, 表面处理样式可选(镜面、钛金、发纹等);
- 按钮型号可供选择;
- 信号输入方式: 7段码、BCD码、格雷码或二进制码;
- 有“超载、紧急”等文字显示功能;
- 具备内置检修功能盒;
- 铰链开启式面板结构, 左或右开启;
- 以面板装饰螺钉固定面板。
- Face plate: mirror finished stainless steel, titanium finished stainless steel, hairline-finished stainless steel;
- Various push buttons for your selection;
- Signal input mode: 7 segment, BCD code, Grey code or Binary code;
- "OVERLOAD" & "EMERGENCY" are displayed;
- Internal error detection and correction function box;
- Hinged face plate can be opened from left or right;
- Fixing the faceplate with ornamental nail.

## 可选按钮型号 Optional Push Button



BA160系列



BA180系列



BA200系列



BA210系列



BA230系列

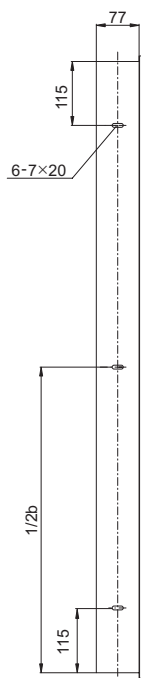
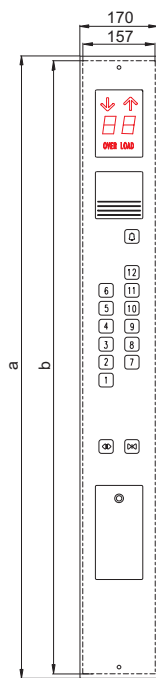


KA300系列

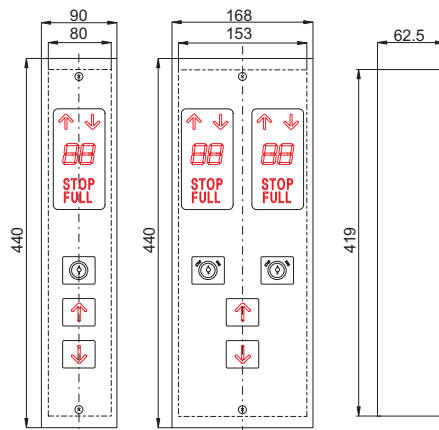
## 显示模块工作电压 Working Voltage of Display Module

7段码(可选) 7 Segment(Optional)	DC12V; DC24V; AC12V; AC24V
点阵显示(可选) Lattice Display(Optional)	DC12V; DC24V

## 外形和安装尺寸 Figure & Installation Dimension(mm)



层站数 Landing		a	b	应急照明 Emergency Laming
BC161, BC162	BC163, BC164			
2~20	2~22	1386	1366	无
21~30	23~32	1574	1554	无
2~18	1~18	1386	1366	有
19~28	23~32	1574	1554	有



## BC180 BX180 系列 BC180 BX180 Series



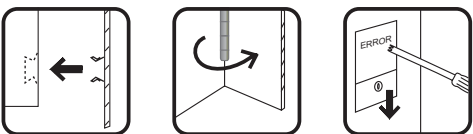
BC187

BC188



BX182

BX186



### 特点和规格 Feature & Specification

- 不锈钢面板，表面处理样式可选(镜面、钛金、发纹等)；
  - 按钮型号可供选择；
  - 信号输入方式：7段码、BCD码、格雷码或二进制码；
  - 有“超载、紧急”等文字显示功能；
  - 具备内置检修功能盒；
  - 铰链开启式面板结构，左或右开启。
- Face plate: mirror finished stainless steel, titanium finished stainless steel, hairline-finished stainless steel;
  - Various push buttons for your selection;
  - Signal input mode: 7 segment, BCD code, Grey code or Binary code;
  - "OVERLOAD" & "EMERGENCY" are displayed;
  - Internal error detection and correction function box;
  - Hinged face plate can be opened from left or right.

### 可选按钮型号 Optional Push Button



BA160系列

BA180系列

BA200系列

BA210系列

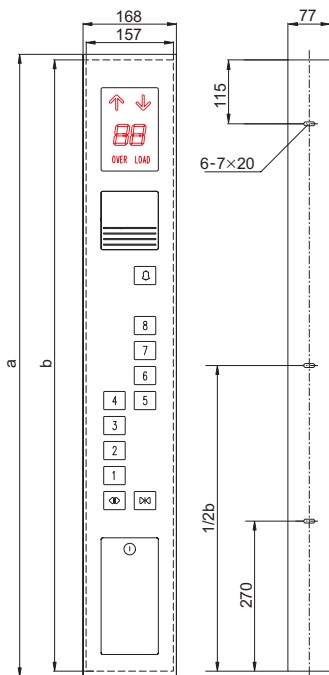
BA230系列

KA300系列

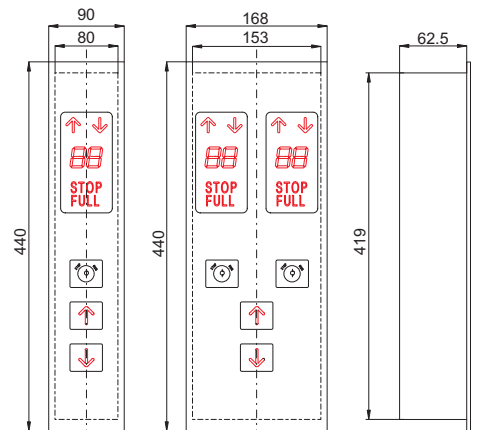
### 显示模块工作电压 Working Voltage of Display Module

7段码(可选) 7 Segment(Optional)	DC12V; DC24V; AC12V; AC24V
点阵显示(可选) Lattice Display(Optional)	DC12V; DC24V

### 外形和安装尺寸 Figure & Installation Dimension(mm)



层站数 Landing	a	b	层站数(有应急照明) Landing(Emergency Laming)	a	b
2~16	1120	1100	2~14	1120	1100
17~24	1300	1280	15~22	1300	1280
25~32	1480	1460	23~30	1480	1460
33~36	1570	1550	31~34	1570	1550



# BC190 BX190 系列 BC190 BX190 Series



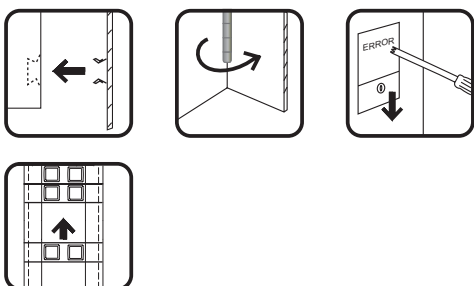
BC191

BC192



BX191

BX192



## 特点和规格 Feature & Specification

- 塑料插板组合式面板;
  - 按钮型号可供选择;
  - 信号输入方式: 7段码、BCD码、格雷码或二进制码;
  - 有“超载、紧急”等文字显示功能;
  - 具备内置检修功能盒;
  - 铰链开启式面板结构, 左或右开启。
- Face plate made of plastic flashboards;
  - Various push buttons for your selection;
  - Signal input mode: 7 segment, BCD code, Grey code or Binary code;
  - "OVERLOAD" & "EMERGENCY" are displayed;
  - Internal error detection and correction function box;
  - Hinged face plate can be opened from left or right.

## 可选按钮型号 Optional Push Button

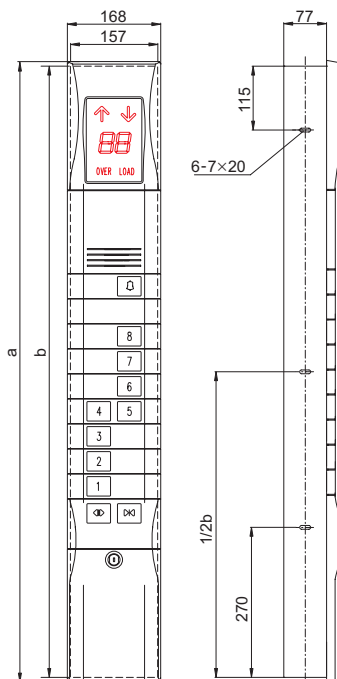


BA180系列 BA200系列

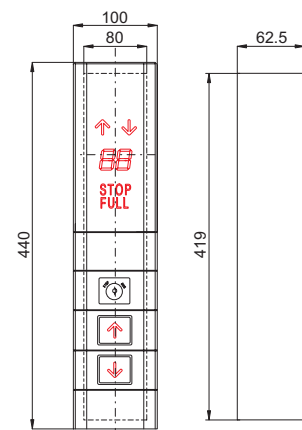
## 显示模块工作电压 Working Voltage of Display Module

7段码(可选) 7 Segment(Optional)	DC12V; DC24V; AC12V; AC24V
点阵显示(可选) Lattice Display(Optional)	DC12V; DC24V

## 外形和安装尺寸 Figure & Installation Dimension(mm)



层站数 Landing	a	b	层站数(有应急照明) Landing(Emergency Laming)	a	b
2~16	1120	1100	2~14	1120	1100
17~24	1300	1280	15~22	1300	1280
25~32	1480	1460	23~30	1480	1460
33~36	1570	1550	31~34	1570	1550



# BC190 BX190 系列 BC190 BX190 Series



BC195

BC196

## 特点和规格 Feature & Specification

- 塑料插板组合式面板;
  - 按钮型号可供选择;
  - 信号输入方式: 7段码、BCD码、格雷码或二进制码;
  - 有“超载、紧急”等文字显示功能;
  - 具备内置检修功能盒;
  - 铰链开启式面板结构, 左或右开启。
- Face plate made of plastic flashboards;
  - Various push buttons for your selection;
  - Signal input mode: 7 segment, BCD code, Grey code or Binary code;
  - "OVERLOAD" & "EMERGENCY" are displayed;
  - Internal error detection and correction function box;
  - Hinged face plate can be opened from left or right.

## 可选按钮型号 Optional Push Button

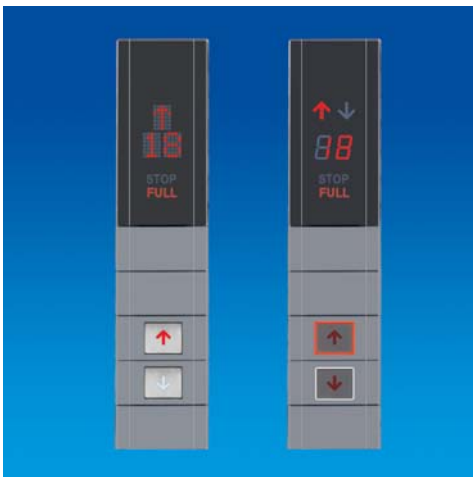


BA180系列 BA200系列

## 显示模块工作电压 Working Voltage of Display Module

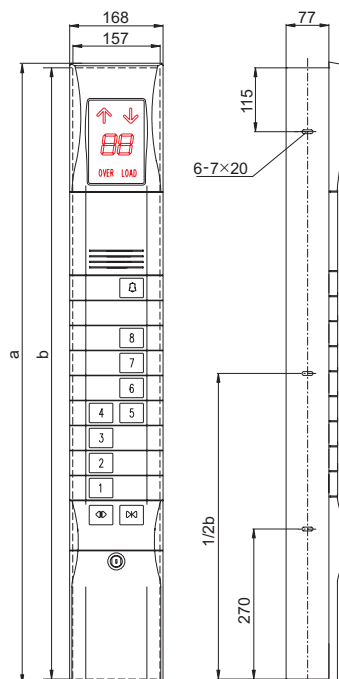
7段码(可选) 7 Segment(Optional)	DC12V; DC24V; AC12V; AC24V
点阵显示(可选) Lattice Display(Optional)	DC12V; DC24V

## 外形和安装尺寸 Figure & Installation Dimension(mm)

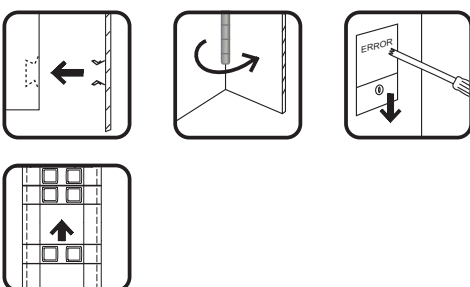
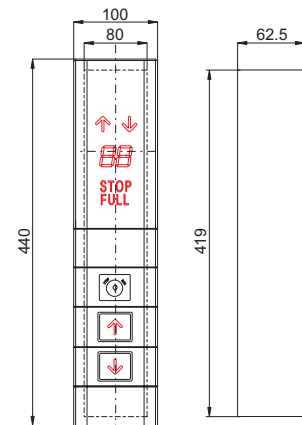


BX195

BX196



层站数 Landing	a	b	层站数(有应急照明) Landing(Emergency Laming)	a	b
2~16	1120	1100	2~14	1120	1100
17~24	1300	1280	15~22	1300	1280
25~32	1480	1460	23~30	1480	1460
33~36	1570	1550	31~34	1570	1550



# BC200 BX200 系列 BC200 BX200 Series



BC201

BC202

## 特点和规格 Feature & Specification

- 不锈钢插板组合式面板;
  - 按钮型号可供选择;
  - 信号输入方式: 7段码、BCD码、格雷码或二进制码;
  - 有“超载、紧急”等文字显示功能;
  - 具备内置检修功能盒;
  - 铰链开启式面板结构, 左或右开启。
- Face plate made of stainless steel flashboards;
  - Various push buttons for your selection;
  - Signal input mode: 7 segment, BCD code, Grey code or Binary code;
  - "OVERLOAD" & "EMERGENCY" are displayed;
  - Internal error detection and correction function box;
  - Hinged face plate can be opened from left or right.

## 可选按钮型号 Optional Push Button



BA200系列 BA210系列

## 显示模块工作电压 Working Voltage of Display Module

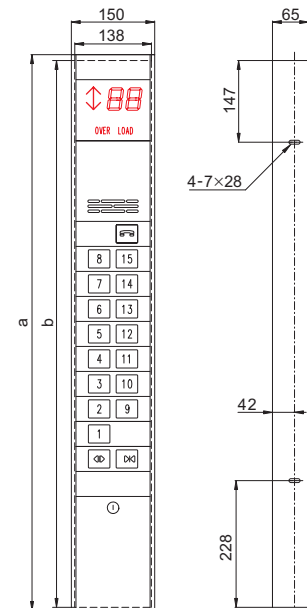
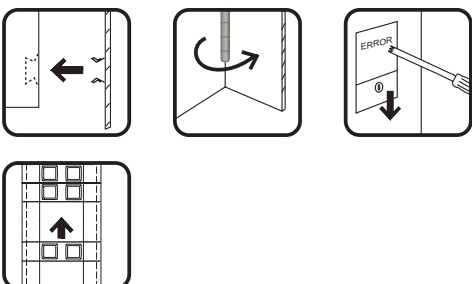
7段码(可选) 7 Segment(Optional)	DC12V; DC24V; AC12V; AC24V
点阵显示(可选) Lattice Display(Optional)	DC12V; DC24V

## 外形和安装尺寸 Figure & Installation Dimension(mm)

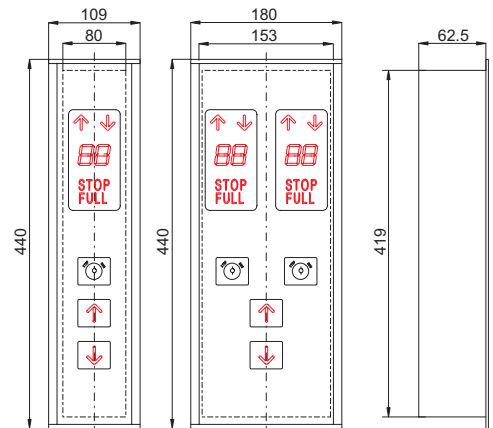


BX201

BX204



层站数 Landing	a	b	层站数(有应急照明) Landing(Emergency Laming)	a	b
2~16	1000	984	2~14	1000	984
17~24	1180	1164	15~22	1180	1164



# BC210 BX210 系列 BC210 BX 210 Series



BC213

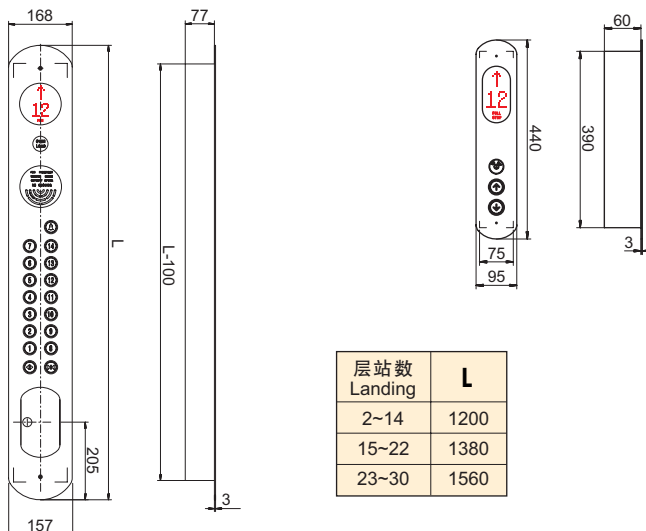
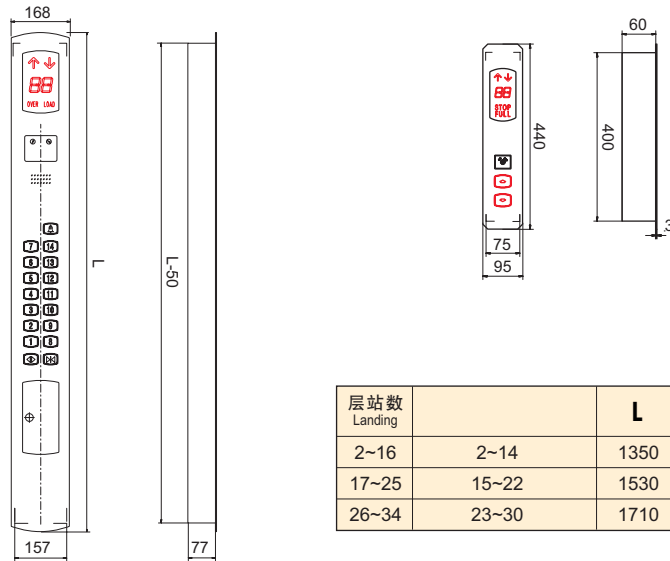
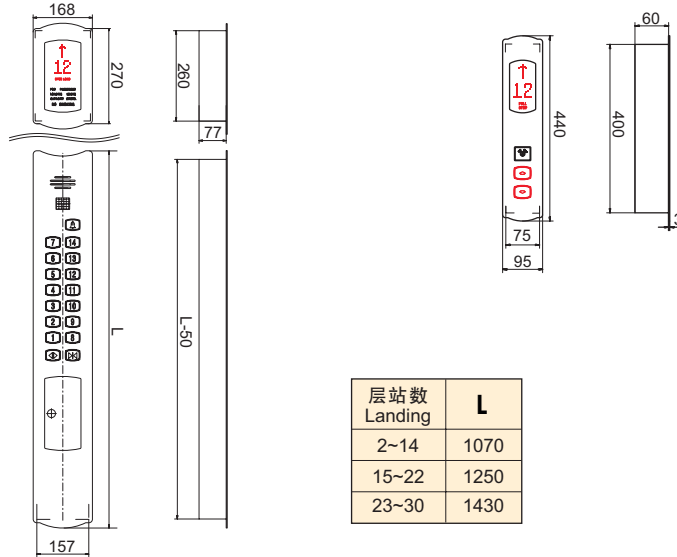
BC215



BX213

BX215

## 外形和安装尺寸 Figure & Installation Dimension(mm)



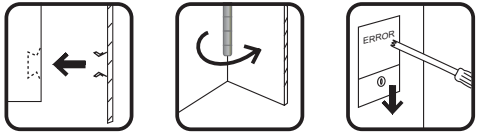
# BC210 BX210 系列 BC210 BX210 Series



BC217



BX217



### 特点和规格 Feature & Specification

- 采用中间发纹和两边镜面, 具有独特的视觉效果;
  - 按钮型号可供选择;
  - 信号输入方式: 7段码、BCD码、格雷码或二进制码;
  - 有“超载、紧急”等文字显示;
  - 具备内置检修功能盒;
  - 铰链开启式面板结构;
  - 以面板装饰螺钉固定面板。
- The central part of COP face plate is hairlined finished stainless steel. Two sides of COP face plate are mirror finished stainless steel;
  - Various optional types of push button with LED illuminators;
  - Signal input mode 7 segment, BCD code, Grey code or Binary code;
  - Word display function like "overloading" "emergency" etc;
  - Internal error detection and correction function box;
  - Hinged face plate structure;
  - Fixing the face plate with ornamental nails.

### 可选按钮型号 Optional Push Button

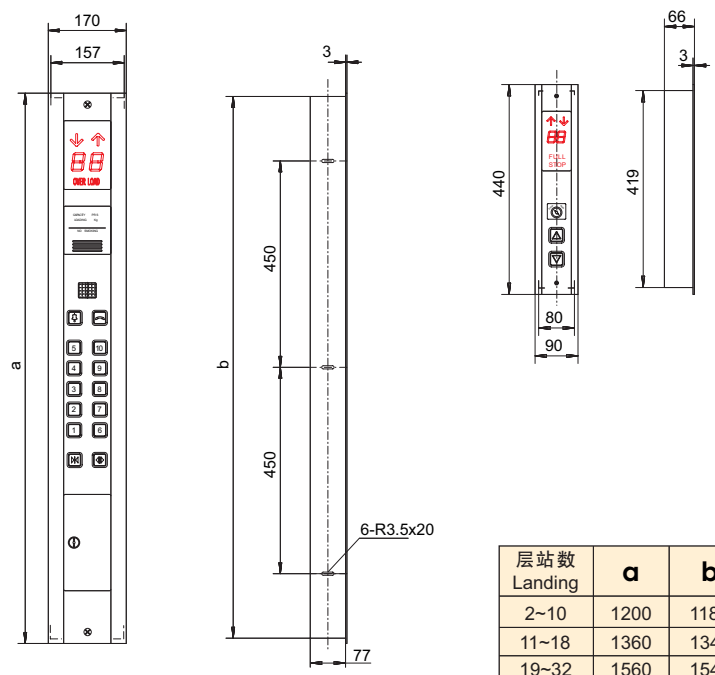


BA160系列 BA180系列 BA200系列 BA210系列 BA230系列 KA300系列

### 显示模块工作电压 Working Voltage of Display Module

7段码(可选) 7 Segment(Optional)	DC12V; DC24V; AC12V; AC24V
点阵显示(可选) Lattice Display(Optional)	DC12V; DC24V

### 外形和安装尺寸 Figure & Installation Dimension(mm)



层站数 Landing	a	b
2~10	1200	1180
11~18	1360	1340
19~32	1560	1540

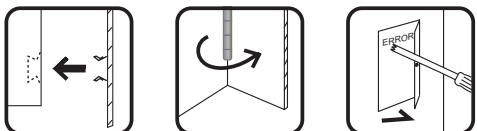
# BC210 BX210 系列 BC210 BX 210 Series



BC211



BX211



## 特点和规格 Feature & Specification

- 分体式BC211操纵盘显示部分和按钮部分分开，可以调整它们之间的安装距离；
- 镜面BC213&BX213两头做成圆弧形；
- BC215&BX215，面板采用钛金板，外形和辅件、配件均体现圆弧的风格。
- COP BC210 is composed of two parts, one is indicator, the other is push buttons part. The distance between indicator and push buttons part can be adjusted for your selection;
- The shape of COP BC213 & HPI BX213 is curve;
- BC215 & BX215 : Titanium face plate. The shape of face plate, face plate & inspection box is curve.

## 可选按钮型号 Optional Push Button



BA160系列 BA180系列 BA200系列 BA210系列 BA230系列 KA300系列

## 产品性能 Property

电气性能 Electrical Properties	电压等级 Rated Voltage	DC12V; DC24V; AC12V; AC24V
	电压极性 Rated Polarity	共阴 Common-Cathode; 共阳 Common-Anode
	按钮型号 Push Button Type	配套 Matched Push Button
	信号输入格式 Signal Input Type	七段码 Seven Segment Code; BCD; 格雷码 Grey Code
	显示形式 Indication Type	七段数码管 Seven Segment; 点阵、尖角滚动 Lattice display with arrow rolling; 点阵、尖角不滚动 Lattice display without arrow rolling
机械性能 Mechanical Properties	面板材料 Material of Faceplate	原纹SUS Ordinary SUS; 镜面板 Specular SUS; 常规发纹SUS Routine finished SUS; 钛金板 Titanium Faceplate; 短丝发纹SUS Short-finished SUS
	材料厚度 Thickness of Faceplate	2mm; 或3mm
	铭牌类型 Type of Nameplate	塑料印刷 Plastic Printing; 不锈钢蚀刻 Stainless Steel Etching ; 面板上直接加工 Direct process on the faceplate; 激光打标 Laser Printing;
	检修门形式 Open mode of Test Door	侧开 From Side; 下拉 From up to down



# BC230 BX230 系列 BC230 BX230 Series



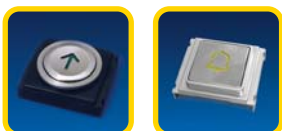
BC231

BX231

## 特点和规格 Feature & Specification

- 不锈钢面板，表面处理样式可选(镜面、钛金、发纹等)；
- 薄形面板两端带方向灯功能，镶边内装有照明指示模块；
- 选用配套的扁平式超薄按钮；
- 显示芯子为超薄形，信号输入方式：7段码、BCD码、格雷码或二进制码；
- 面板和安装板通过卡簧式结构连接，安装板与面板边缘齐平；
- 安装无需轿壁开孔，只预留线缆出线孔。
- Face plate: mirror finished stainless steel, titanium finished stainless steel, hairline-finished stainless steel;
- Turn signal function lights at two ends of faceplate, and illuminance module attached;
- Using matched super-thin push buttons;
- Super-thin indicator core; signal input mode: 7 segment, BCD code, Grey code or Binary code;
- Connecting faceplate with other plates by the way of inlay mounting type;
- Surface mount type, convenient for mounting, only need places left for fixing cable.

## 可选按钮型号 Optional Push Button



BA230系列

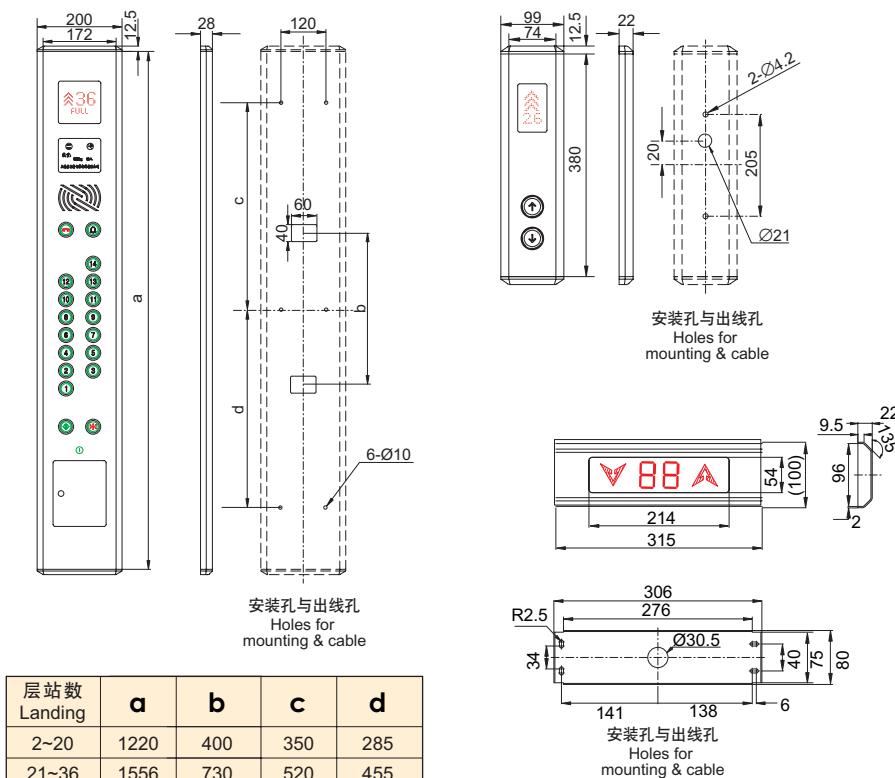
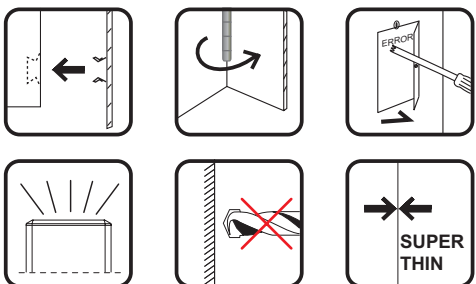
## 显示模块工作电压 Working Voltage of Display Module

7段码(可选) 7 Segment(Optional)	DC12V; DC24V; AC12V; AC24V
点阵显示(可选) Lattice Display(Optional)	DC12V; DC24V

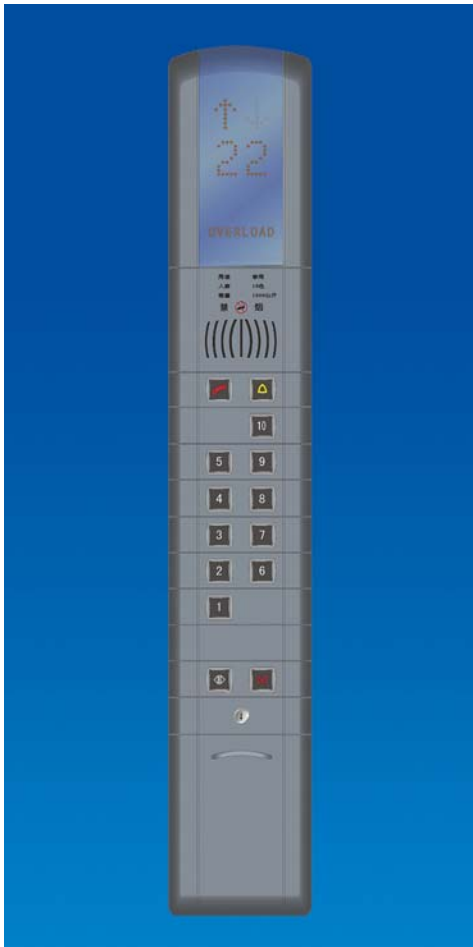
## 外形和安装尺寸 Figure & Installation Dimension(mm)



BM231



# BC400 BX400 系列 BC400 BX400 Series



BC401



BX401

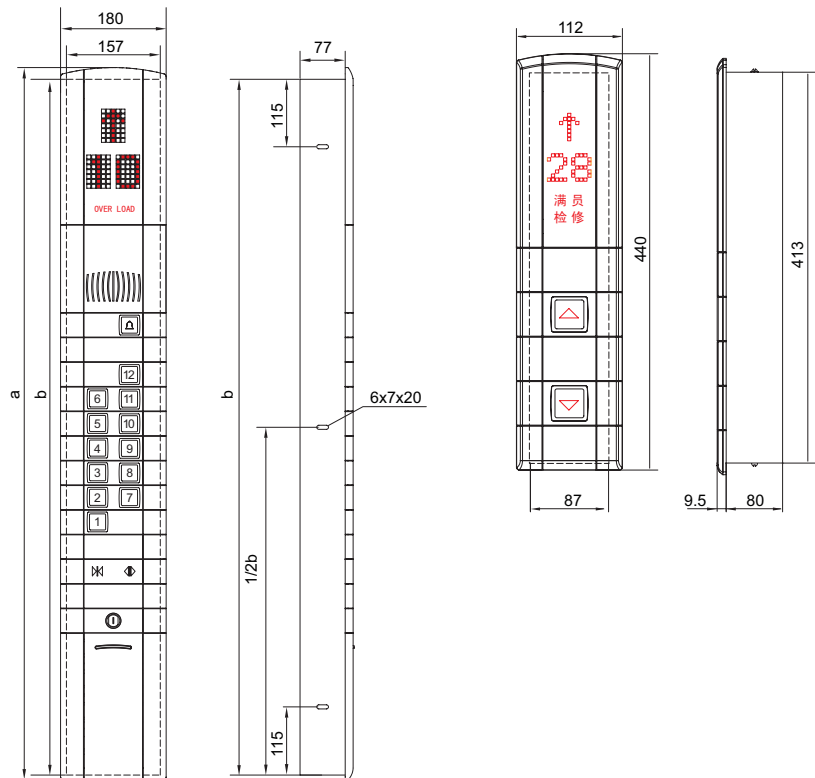
## 特点和规格 Feature & Specification

- 塑料插板组合式面板;
  - 塑料按钮,文字以及按钮底色可以选择;
  - 信号输入方式:7段码 BCD码 格雷码或二进制码;
  - 有“超载、紧急”等文字显示功能;
  - 具备内置检修功能盒;
  - 上下滑动式面板结构,往下打开。
- Face plate made of plastic flashboards;
  - Plastic push buttons. Words and background color for your selection;
  - Signal input mode: 7 segment, BCD code, Grey code or Binary code;
  - "OVERLOAD" & "EMERGENCY" are displayed;
  - Internal error detection and correction function box;
  - Inspection box is opened in down direction.

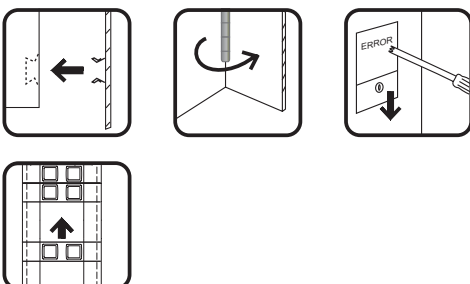
## 显示模块工作电压 Working Voltage of Display Module

7段码(可选) 7 Segment(Optional)	DC12V; DC24V; AC12V; AC24V
点阵显示(可选) Lattice Display(Optional)	DC12V; DC24V

## 外形和安装尺寸 Figure & Installation Dimension(mm)



层站数 Landing	a	b
2~18	1214	1169
19~30	1466	1421



# BC420 BX420 系列 BC420 BX420 Series



BC421

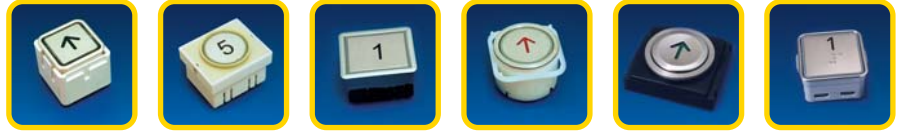


BX421

## 特点和规格 Feature & Specification

- 不锈钢插板拼装式面板，表面处理样式可选（镜面、钛金、发纹等）；
  - 按钮型号可供选择；
  - COP整体高度可调；铭牌图案可用蚀刻或印刷；
  - 信号输入方式：7段码、BCD码、格雷码或二进制；
  - 具备内置检修功能盒，拉门板可选用下拉式或者侧开式；
  - 铰链开启式面板结构，左或右开启。
- Face plate made of stainless steel flashboards, types of face plate: hairline-finished stainless steel face plate, mirror finished stainless steel face plate;
  - Various push buttons for your selection;
  - COP height can be adjustable, Nameplate can be etched or silk printed;
  - Signal input mode: 7 segment, BCD code, Grey code, or Binary code;
  - Function box door can be opened from the bottom, the left or the right;
  - Hinged face plate can be opened from left or right.

## 可选按钮型号 Optional Push Button

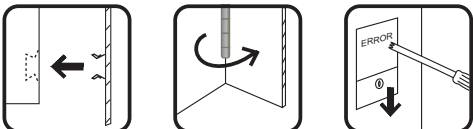
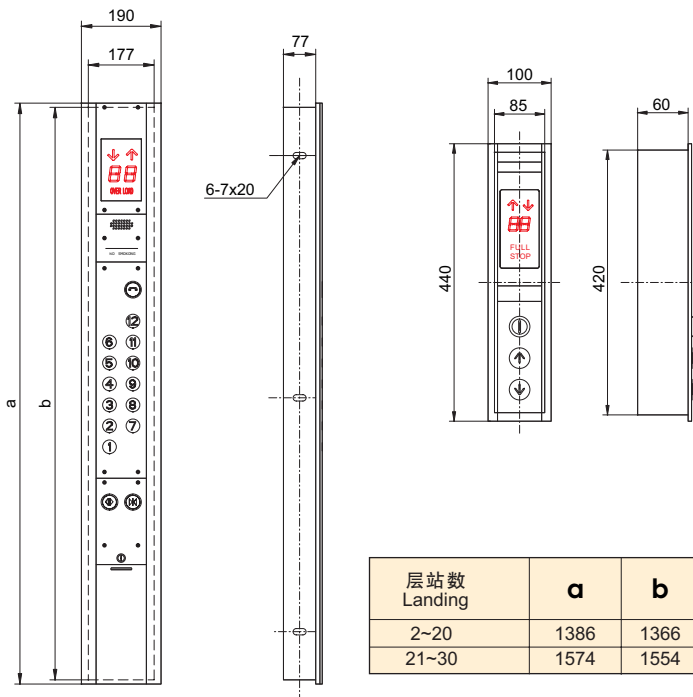


BA160系列 BA180系列 BA200系列 BA210系列 BA230系列 KA300系列

## 显示模块工作电压 Working Voltage of Display Module

7段码(可选) 7 Segment(Optional)	DC12V; DC24V; AC12V; AC24V
点阵显示(可选) Lattice Display(Optional)	DC12V; DC24V

## 外形和安装尺寸 Figure & Installation Dimension(mm)



## BC430 BX430 系列 BC430 BX430 Series



BC431

BX431

### 特点和规格 Feature & Specification

- 采用管形结构，外形独特，整体美观，适用于低层站或观光梯和高档电梯；
- 体现产品的立体感；
- BC432主要安装在轿厢的四周，既可以作为扶手使用又可以作为操纵盘使用，而且解决了人多拥挤在轿厢内按按钮难的困难；
- 采用不锈钢材料，可选用抛光或发纹处理表面；
- 安装方便，无需轿壁开孔，只预留线缆出线孔及固定孔。
- Adopt tube structure, special in shape and beautiful in whole, suitable for low-floor elevator, sightseeing elevator and high grade elevator;
- Specially stereosonic visual feelings;
- BC432 mainly fixed around corners of elevator car, useful both as handrail and as COP, solve the problem to push button when crowded;
- Types of surface: hairline-finished stainless steel face and polished stainless steel face;
- Convenient to install only need holes left for cables.

### 可选按钮型号 Optional Push Button



BA160系列



BA200系列



BA210系列



BA230系列



KA300系列

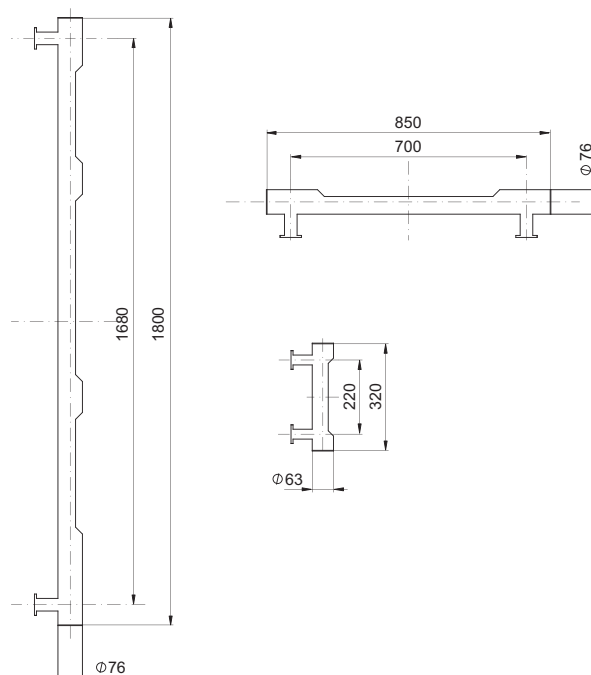
### 显示模块工作电压 Working Voltage of Display Module

7段码(可选) 7 Segment(Optional)	DC12V; DC24V; AC12V; AC24V
点阵显示(可选) Lattice Display(Optional)	DC12V; DC24V

### 外形和安装尺寸 Figure & Installation Dimension(mm)



BC432



# BC480 BX480 系列 BC480 BX480 Series



BC480

## 特点和规格 Feature & Specification

- 不锈钢面板, 表面处理样式可选(镜面、钛金、发纹等);
- 按钮型号可供选择;
- 铰链开启式面板结构, 左或右开启;
- 采用大视窗, 笔段显示格式, 显示内容更加柔和、清晰;
- 低功耗、长寿命、高对比度、宽视角, 共有黑底白字、蓝底白字、黑底红字、蓝底红字、黑底绿字、蓝底绿字、黑底橙字等多种规格可供选择。
- Face plate: mirror finished stainless steel, titanium finished stainless steel, hairline-finished stainless steel;
- Various push buttons for your selection;
- Hinged face plate can be opened in left or right direction;
- Big display window with clearer display contents, fully conforming to our devising principle of humanity;
- Low power loss, endurance, sharp contrast and wide view angle with specifications as follows for your selection: white words with black background; white words with blue background; red words with black background; red words with blue background; green words with black background; green words with blue background; orange words with black background etc.

## 可选按钮型号 Optional Push Button



BA160系列 BA180系列 BA200系列 BA210系列 BA230系列 KA300系列

## 显示模块工作电压 Working Voltage of Display Module

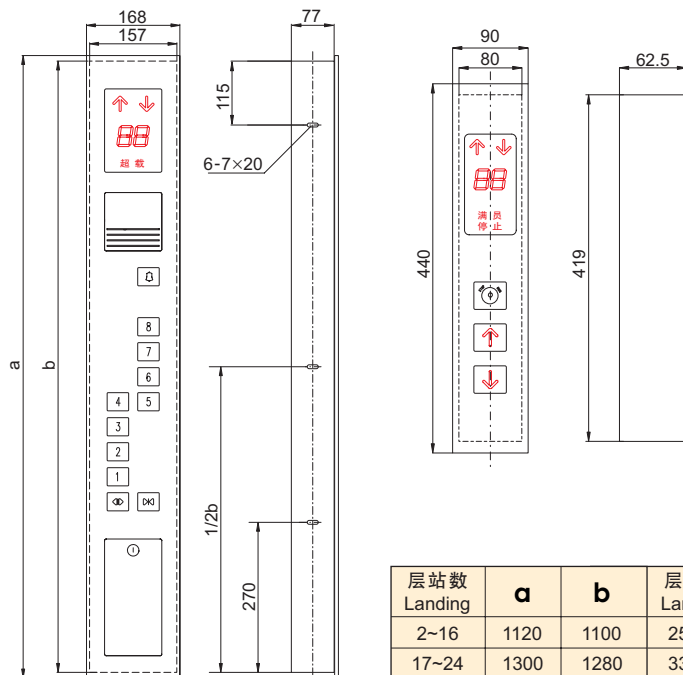
7段码  
7 Segment

DC12V; DC24V; AC12V; AC24V

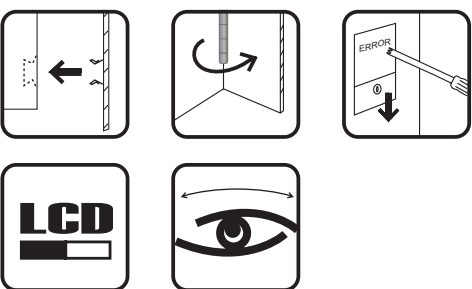


BX480

## 外形和安装尺寸 Figure & Installation Dimension(mm)



层站数 Landing	a	b	层站数 Landing	a	b
2~16	1120	1100	25~32	1480	1460
17~24	1300	1280	33~36	1570	1550



## BC490 BX490 系列 BC490 BX490 Series



BC491

### 特点和规格 Feature & Specification

- 不锈钢插板拼装式面板，表面处理样式可选（镜面、钛金、发纹等）；
- 按钮型号可供选择；
- 按钮面板采用凸折弯不锈钢，立体感较强；
- 卡簧式固定方式。
- Face plate made of stainless steel flashboards, types of face plate: hairline-finished stainless steel, titanium finished stainless steel, mirror finished stainless steel ;
- Various push buttons for your selection;
- Push button plate made of curved stainless steel;
- Fixed by clipped leaf spring.

### 可选按钮型号 Optional Push Button



BA160系列

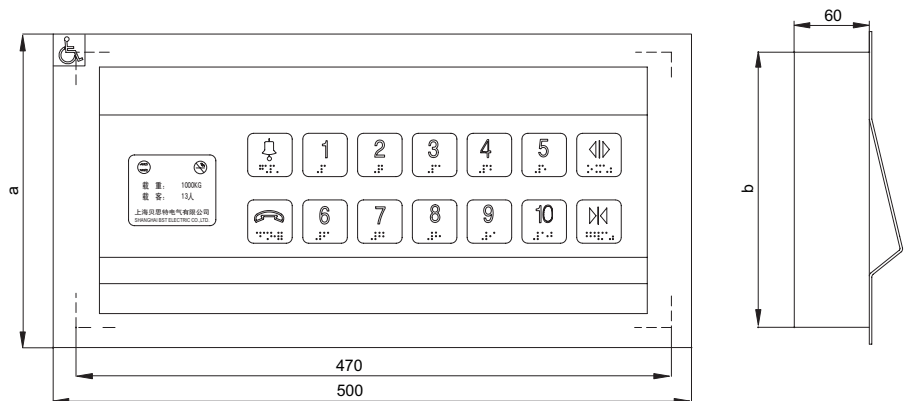


BA210系列

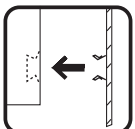


KA300系列

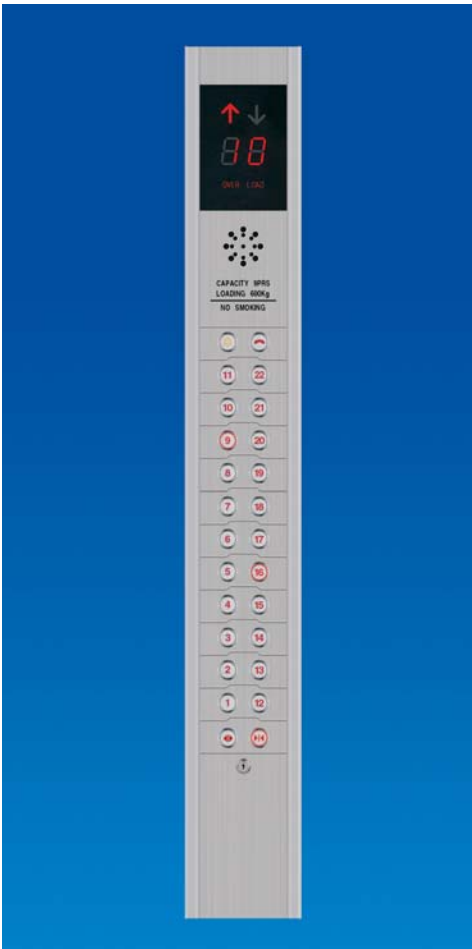
### 外形和安装尺寸 Figure & Installation Dimension(mm)



层站数 Landing	a	b
2~10	250	220
11~21	320	290



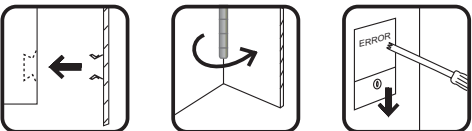
# BC500 BX500 系列 BC500 BX500 Series



BC501



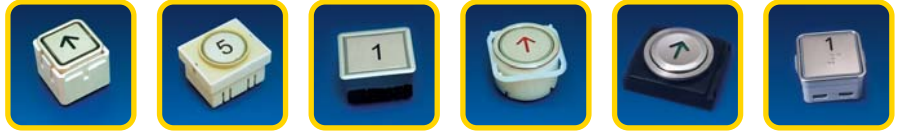
BX501



## 特点和规格 Feature & Specification

- 不锈钢插板组合式面板, 铝合金镶边;
- 按钮型号可供选择;
- COP整体高度可调;
- 信号输入方式: 7段码、BCD码、格雷码或二进制;
- 采用大视窗, 可根据需要改变视窗大小;
- 具备内置检修功能盒, 拉门板可选用下拉式或者侧开式;
- 铰链开启式面板结构, 左或右开启。
- Face plate made of stainless steel flashboards, aluminium alloy frame;
- Various push buttons for your selection;
- COP height can be adjusted;
- Signal input mode: 7 segment, BCD code, Grey code, or Binary code;
- Big display can be adjusted upon requirement;
- Function box door can be opened from the bottom, the left or the right;
- Hinged face plate can be opened from left or right.

## 可选按钮型号 Optional Push Button

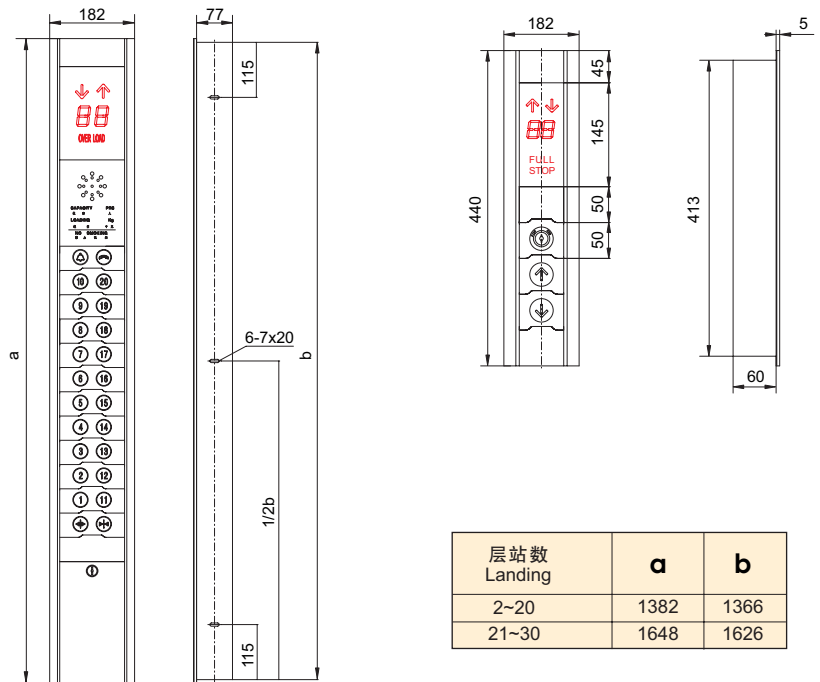


BA160系列 BA180系列 BA200系列 BA210系列 BA230系列 KA300系列

## 显示模块工作电压 Working Voltage of Display Module

7段码(可选) 7 Segment(Optional)	DC12V; DC24V; AC12V; AC24V
点阵显示(可选) Lattice Display(Optional)	DC12V; DC24V

## 外形和安装尺寸 Figure & Installation Dimension(mm)



# BF130 系列 BF130 Series



BF131

BF132

## 特点和规格 Feature & Specification

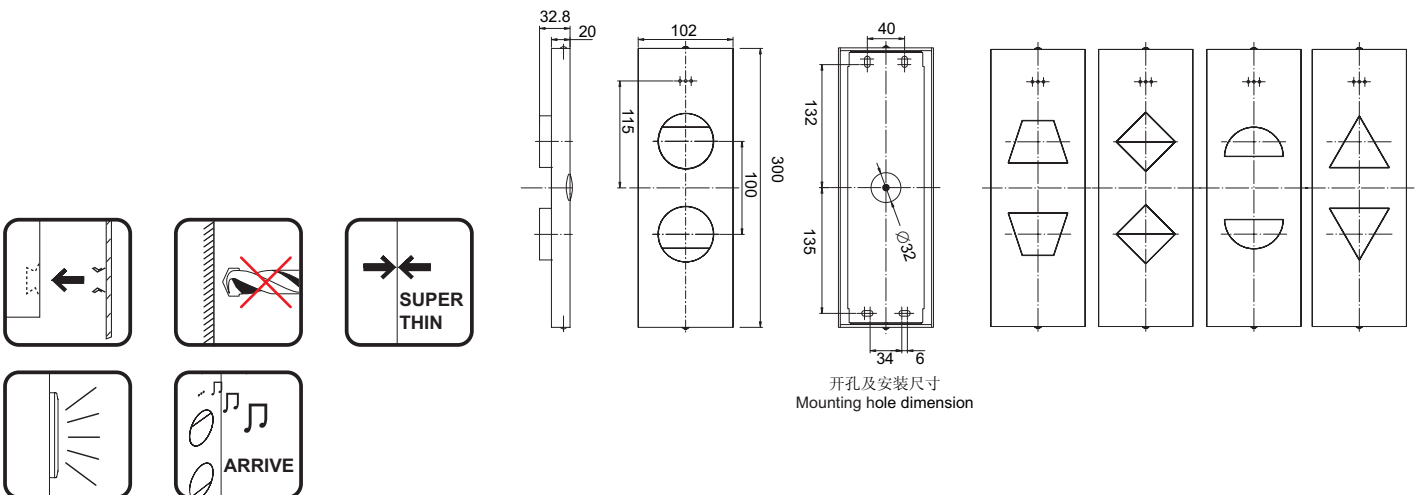
- 不锈钢面板，表面处理样式可选(镜面、钛金、发纹等)；
- 发光部分采用LED照明，新型反光、导光和散光技术，光线均匀、柔和，发光体的形状各异，也可根据客户的要求定制；
- 到站时伴有悦耳的到站提示音；
- Face plate: mirror finished stainless steel, titanium finished stainless steel, hairline-finished stainless steel;
- Adopting updated light reflection technologies;
- With floor passing chimes;
- Surface mount type, convenient for mounting, only need places left for fixing cable.

采用表贴式安装，安装时除需要预留线缆出线孔外，无须在轿壁上开安装孔。

## 显示模块工作电压 Working Voltage of Display Module

电气性能 Electrical Properties	电压等级 Rated Voltage	DC24V
	电压极性 Rated Polarity	共阴 Common-Cathode; 共阳 Common-Anode
	发光颜色 Shining Color	<span style="color: red;">■</span> 红色 Red; <span style="color: orange;">■</span> 橙色 Orange; <span style="color: yellow;">■</span> 黄色 Yellow; <span style="color: green;">■</span> 绿色 Green; <span style="color: blue;">■</span> 蓝色 Blue; <span style="color: white;">■</span> 白色 White
机械性能 Mechanical Properties	面板材料 Material of Faceplate	原纹SUS Ordinary SUS; 镜面板 Specular SUS; 常规发纹SUS Routine finished SUS; 钛金板 Titanium Faceplate; 短丝发纹SUS Short-finished SUS
	材料厚度 Thickness of Faceplate	2mm
	发光体形状 Luminant Shape	圆形 Roundness; 三角形 Triangle; 半圆形 Semicircle; 菱形 Rhombus; 梯形 Trapezoid

## 外形和安装尺寸 Figure & Installation Dimension(mm)

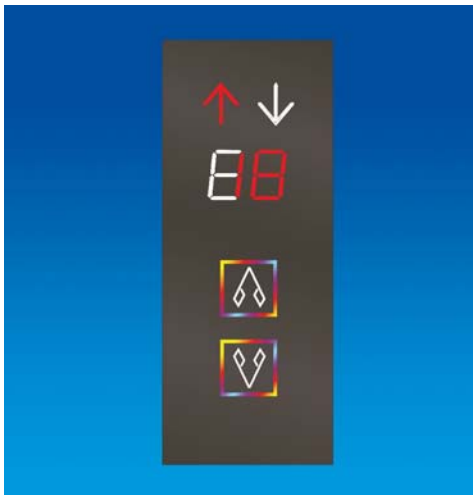




## BX310 BX320 系列 BX310 BX320 Series



BX313



BX314



BX322

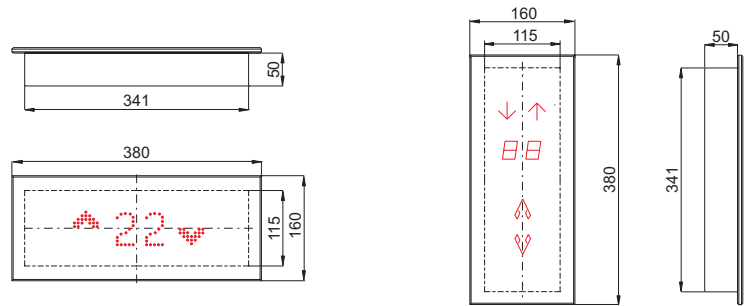
### 特点和规格 Feature & Specification

- 有机或钢化玻璃显示面板;
- 点阵显示, 可选7段码显示;
- 选用感应按钮(适用于BX314)。
- Use plexiglass or toughened glass display face plate;
- Lattice display or 7 segment display(optional);
- Adopt inductive push button (Suitable for BX314).

### 显示模块工作电压 Working Voltage of Display Module

7段码(可选) 7 Segment(Optional)	DC12V; DC24V; AC12V; AC24V
点阵显示(可选) Lattice Display(Optional)	DC12V; DC24V

### 外形和安装尺寸 Figure & Installation Dimension(mm)



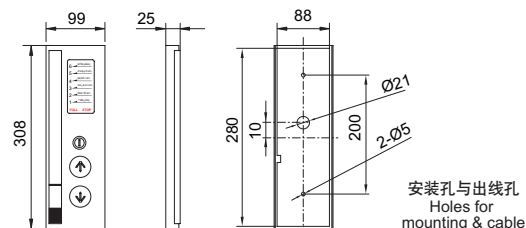
### 特点和规格 Feature & Specification

- 不锈钢面板, 表面处理样式可选(镜面、钛金、发纹);
- 模拟电梯运行状态, 显示简单、明了;
- 信号输入方式: 七段码、BCD码、格雷码或二进制码;
- 可以设定闪烁指示所在的楼层;
- 显示部分采用LED发光, 颜色可选, 具有高亮度、低功耗特点;
- 具有清楚的楼层用途介绍标示, 同时可以作相应介绍的更改;
- 适用于总楼层数 ≤ 31层。
- Face plate: mirror finished stainless steel, titanium finished stainless steel, hairline-finished stainless steel;
- Simulate elevator operation;
- Signal input mode: 7 segment, BCD code, Grey code, Binary code;
- Flickering indicator floor can be set;
- LED is adopted as light. LED color is optional, which has high brightness and low power waste;
- Floors usage can be introduced by marks;
- This kind of HPI is suitable for total floors less than 31.

### 电气性能 Electrical properties

工作电压 Working Voltage	DC15~40V
工作电流 Working Current	≤ 50mA

### 外形和安装尺寸 Figure & Installation Dimension(mm)



## BX490 系列 BX490 Series



BX491

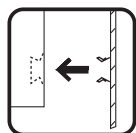
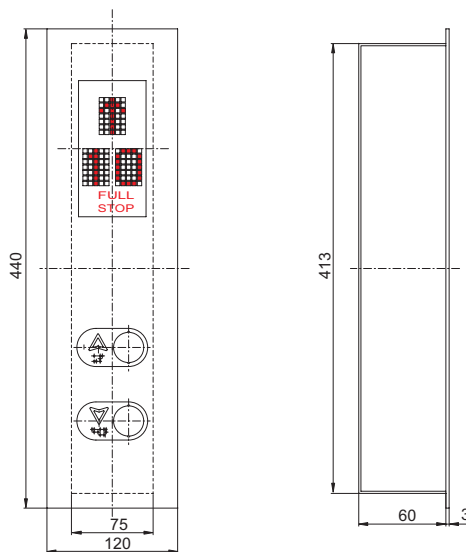
### 特点和规格 Feature & Specification

- 不锈钢面板，表面处理样式可选(镜面、钛金、发纹)；
- 产品符合EN-81标准；
- 按钮动作后发两声，提示此按钮已选中，适用残疾人操作。
- Face plate: mirror finished stainless steel, titanium finished stainless steel, hairline-finished stainless steel;
- BX491 is produced conforming to EN-81 standards;
- There will be 2 beeps after push button is pressed, which shows that this push button is selected. It is very convenient for the disabled to operate car operation panel.

### 显示模块工作电压 Working Voltage of Display Module

7段码(可选) 7 Segment(Optional)	DC12V; DC24V; AC12V; AC24V
点阵显示(可选) Lattice Display(Optional)	DC12V; DC24V

### 外形和安装尺寸 Figure & Installation Dimension(mm)



## BZ160 BM180 BS150 系列 BZ160 BM180 BS150 Series



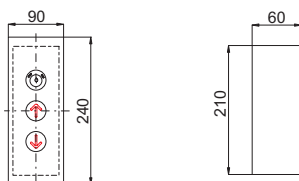
BZ161

BZ162

### 特点和规格 Feature & Specification

- 不锈钢面板, 表面处理样式可选 ( 镜面、钛金、发纹);
- 按钮型号可供选择;
- 可选锁梯功能;
- 可选装饰螺钉或卡簧固定面板。
- Face plate: mirror finished stainless steel, titanium finished stainless steel, hairline-finished stainless steel;
- Various push buttons for your selection;
- Key switch for your selection;
- Face plate is fixed by ornamental screws or clipped leaf spring.

### 外形和安装尺寸 Figure & Installation Dimension(mm)



BM181

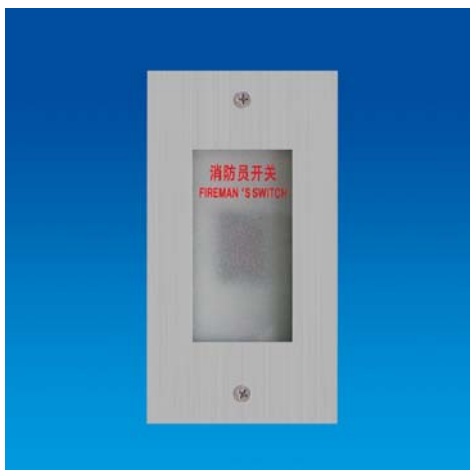
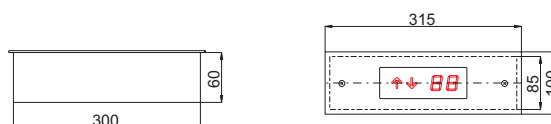
### 特点和规格 Feature & Specification

- 不锈钢面板, 表面处理样式可选 ( 镜面、钛金、发纹);
- 信号输入方式: 7段码、BCD码或二进制码;
- 以面板装饰螺钉固定面板。
- Face plate: mirror finished stainless steel, titanium finished stainless steel, hairline-finished stainless steel;
- Signal input mode: 7 segment, BCD code or Binary code;
- Fixing the faceplate with ornamental nails.

### 显示模块工作电压 Working Voltage of Display Module

7段码 (可选) 7 Segment(Optional)	DC12V; DC24V; AC12V; AC24V
点阵显示 (可选) Lattice Display(Optional)	DC12V; DC24V

### 外形和安装尺寸 Figure & Installation Dimension(mm)



BS152

### 特点和规格 Feature & Specification

- 不锈钢面板, 表面处理样式可选 ( 镜面、钛金、发纹);
- 以面板装饰螺钉固定面板;
- 适用紧急情况下消防用, 敲碎磨砂玻璃接通开关即可。
- Face plate: mirror finished stainless steel, titanium finished stainless steel, hairline-finished stainless steel;
- Fixing the faceplate with ornamental nail;
- Prevent fire under fire-emergency just by breaking glass of the Fireman Switch Box and turning on the fire-switch.

### 外形和安装尺寸 Figure & Installation Dimension(mm)

