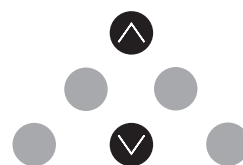




**CABINA MODELLO ADRIATICA**



## CABINA “ADRIATICA”

- Pareti e ante in lamiera zincata portante rivestite in laminato plastico
- Fondo fisso rivestito in gomma o linoleum
- Tetto in lamiera nera verniciato bianco con illuminazione a faretti
- Specchio marchiato
- Zoccolatura e montanti in acciaio inox lucido o satinato o scotch bright
- Pulsantiera a colonna verticale predisposta per pulsanti e segnalazioni
- Uno o più accessi
- Grembiule sotto accesso cabina (a norma EN 81.2)
- Areazione cabina

## “ADRIATICA” CABIN

- Cabin linings and doors in load bearing galvanized sheet steel covered in laminated plastic
- Fix floor covered in rubber and linoleum
- Ceiling in black sheet steel painted white with spot lighting
- Mirror with safety markings
- Skirting board and uprights in chrome stainless steel, satin or scotch bright finish
- Switch panel housed in a vertical column with option to mount buttons and warning displays
- One or more accesses
- Under cabin screen as per Regulation EN 81.2
- Cabin ventilation

## KABINE “ADRIATICA”

- Wände und Türen aus tragendem verzinkten Blech verkleidet mit Kunststofflaminat
- Fester Boden mit Gummi- oder Linoleumverkleidung
- Weißlackiertes Dach aus Schwarzblech mit Spot-Beleuchtung
- Markierter Spiegel
- Sockel und Träger aus poliertem Stahl oder mattiert oder mit Scotch-Bright-Behandlung
- Tastenfeld mit vertikaler Säule ausgelegt für Druckknöpfe und Signalisierungen
- Einer oder mehrere Zugänge
- Schürze unter dem Kabinenzugang (nach EN 81.2)
- Kabinenbelüftung

- TIPO VENEZIA:  
laminato color legno o radica
- TIPO RICCIONE:  
laminato finitura lucida
- TIPO ANCONA:  
laminato finitura pastello
- TIPO BRINDISI:  
laminato finitura quarzo



**NUOVACABILIFT**

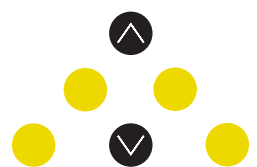
< costruzione cabine per ascensori >

**NUOVA CABI LIFT** - via Dell'Artigianato 13 - 47838 Riccione  
tel +39 0541 600341 - fax +39 0541 695704 - www.nuovacabilift.com





**CABINA MODELLO STEEL**



## CABINA "STEEL"

- Pareti e ante in acciaio inox portante lucido, satinato o scotch bright
- Fondo fisso rivestito in gomma o linoleum
- Tetto in lamiera nera verniciato bianco con illuminazione a faretto
- Specchio marchiato
- Zoccolatura e montanti in acciaio inox lucido, satinato, scotch bright
- Pulsantiera a colonna verticale predisposta per pulsanti e segnalazioni
- Uno o più accessi
- Grembiule sotto accesso cabina (a norma EN 81.2)
- Areazione cabina

## "STEEL" CABIN

- Cabin linings and doors in load bearing stainless steel (chrome, satin or scotch bright)
- Flooring covered in rubber and linoleum
- Ceiling in black sheet steel painted white with spot lighting
- Mirror with safety markings
- Skirting board and uprights coverings in chrome stainless steel, satin or scotch bright finish
- Switch panel housed in a vertical column with option to mount buttons and warning displays
- One or more accesses
- Under cabin screen as per Regulation EN 81.2
- Cabin ventilation

## KABINE "STEEL"

- Wände und Türen aus tragendem Inoxstahl poliert, mattiert oder Scotch-Bright-Behandlung
- Fester Boden mit Gummi- oder Linoleumverkleidung
- Weißlackiertes Dach aus Schwarzblech mit Spot-Beleuchtung
- Markierter Spiegel
- Sockel und Träger aus Stahl poliert, mattiert, Scotch-Bright-Behandlung
- Tastenfeld mit vertikaler Säule ausgelegt für Druckknöpfe und Signalisierungen
- Einer oder mehrere Zugänge
- Schürze unter dem Kabinenzugang (nach EN 81.2)
- Kabinenbelüftung

- TIPO ICE:  
pareti e zoccolatura in acciaio inox lucido o satinato o scotch bright
- TIPO BAD:  
pareti rivestite in acciaio inox ridigizzato e zoccolatura in acciaio inox lucido o satinato o scotch bright

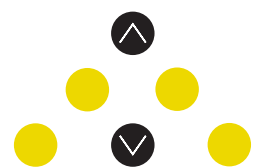


NUOVA CABI LIFT - via Dell'Artigianato 13 - 47838 Riccione  
tel +39 0541 600341 - fax +39 0541 695704 - www.nuovacabilift.com





**CABINA MODELLO PANORAMICO SPECIALE**



## CABINA “PANORAMICO SPECIALE”

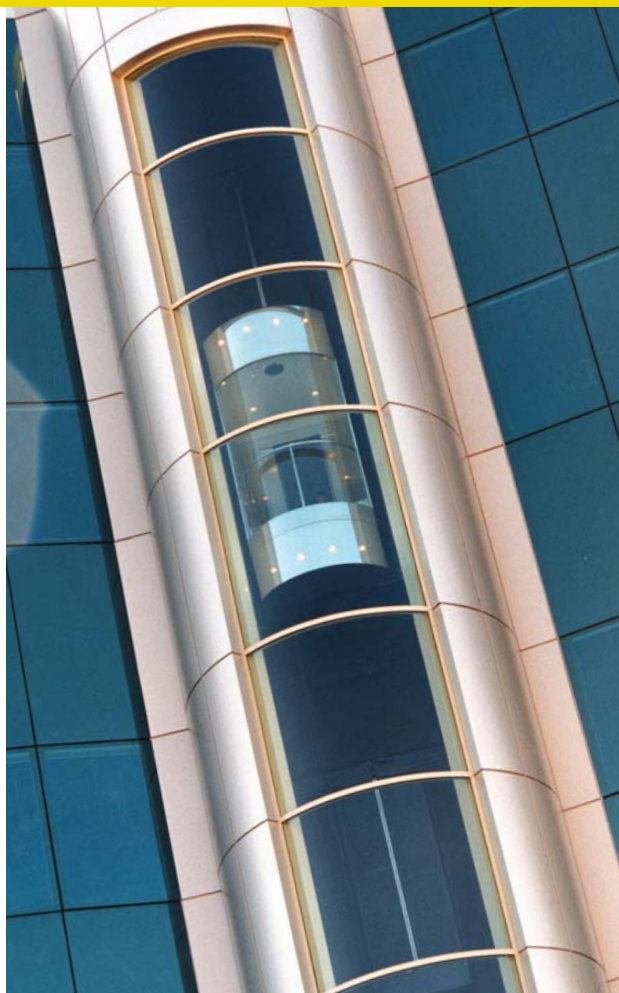
- Pareti in vetro marchiato
- Fondo fisso rivestito in gomma o linoleum
- Tetto in lamiera nera verniciato bianco con illuminazione a faretto
- Specchio marchiato
- Zoccolatura e montanti in acciaio inox lucido o satinato o scotch bright
- Pulsantiera a colonna verticale predisposta per pulsanti e segnalazioni
- Uno o più accessi
- Grembiule sotto accesso cabina (a norma EN 81.2)
- Areazione cabina

## “SPECIAL PANORAMIC” CABIN

- Cabin linings and doors in load bearing plasticized sheet steel
- Flooring covered in rubber and linoleum
- Ceiling in black sheet steel painted white with spot lighting
- Mirror with safety markings
- Skirting board and uprights in plasticized sheet steel or stainless steel
- Switch panel housed in a vertical column with option to mount buttons and warning displays
- One or more accesses
- Under cabin screen as per Regulation EN 81.2
- Cabin ventilation

## “SPEZIAL PANORAMAKABINE”

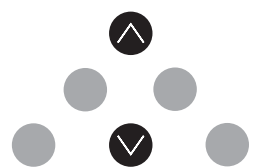
- Wände aus Glas mit Markenzeichen
- Fester Boden mit Belag aus Gummi oder Linoleum
- Weißlackiertes Dach aus Schwarzblech mit Spot-Beleuchtung
- Siegel mit Markenzeichen
- Sockel und Pfosten aus Edelstahl, poliert oder satiniert, oder Scotch Bright
- Tastfeld an vertikaler Säule, vorbereitet für Tasten und Anzeigen
- Eine oder mehrere Achsen
- Schürze unter Kabinenzugang (gemäß Norm EN 81.2)
- Kabinenbelüftung



**NUOVA CABI LIFT** - via Dell'Artigianato 13 - 47838 Riccione  
tel +39 0541 600341 - fax +39 0541 695704 - [www.nuovacabilift.com](http://www.nuovacabilift.com)



**CABINA MODELLO AURORA**



## CABINA “AURORA”

- Pareti e ante in lamiera plastificata lucida portante con inserto in acciaio inox
- Corrimano in acciaio inox
- Fondo fisso rivestito in gomma o linoleum
- Tetto in lamiera nera verniciato bianco con illuminazione tipo aurora
- Specchio marchiato
- Rifiniture in acciaio inox lucido o satinato o scotch bright
- Pulsantiera a colonna verticale predisposta per pulsanti e segnalazioni
- Un accesso
- Grembiule sotto accesso cabina (a norma EN 81.2)
- Areazione cabina

## “AURORA” CABIN

- Cabin linings and doors in load bearing glossy plasticized sheet steel
- Handrail in stainless steel
- Fix floor in rubber and linoleum
- Ceiling in black sheet steel painted white with Aurora type lighting
- Mirror with safety markings
- Fixtures in chrome stainless steel, satin or scotch bright finish
- Switch panel housed in a vertical column with option to mount buttons and warning displays
- One access
- Under cabin screen as per Regulation EN 81.2
- Cabin ventilation

## KABINE “AURORA”

- Wände und Türen aus tragendem, kunststoffbeschichteten poliertem Blech
- Unterer Handlauf aus Inoxstahl
- Fester Boden mit Gummi- oder Linoleumverkleidung
- Weißlackiertes Dach aus Schwarzblech mit Beleuchtung des Typs Aurora
- Markierter Spiegel
- Ausführung in poliertem oder mattiertem Stahl oder mit Scotch-Bright-Behandlung
- Tastenfeld mit vertikaler Säule ausgelegt für Druckknöpfe und Signalisierungen
- Ein Zugang
- Schürze unter dem Kabinenzugang (nach EN 81.2)
- Kabinenbelüftung



**NUOVACABILIFT**

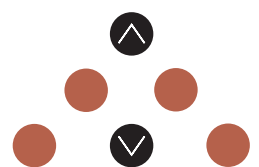
< costruzione cabine per ascensor >

**NUOVA CABI LIFT** - via Dell'Artigianato 13 - 47838 Riccione  
tel +39 0541 600341 - fax +39 0541 695704 - www.nuovacabilift.com





**CABINA MODELLO PRIMAVERA**



## CABINA “PRIMAVERA”

- Pareti e ante in lamiera plastificata portante
- Fondo fisso rivestito in gomma o linoleum
- Tetto in lamiera nera verniciato bianco con illuminazione a faretti
- Specchio marchiato
- Zoccolatura e montanti in lamiera plastificata o acciaio inox
- Pulsantiera a colonna verticale predisposta per pulsanti e segnalazioni
- Uno o più accessi
- Grembiule sotto accesso cabina (a norma EN 81.2)
- Areazione cabina

## “PRIMAVERA” CABIN

- Cabin linings and doors in load bearing plasticized sheet steel
- Flooring covered in rubber and linoleum
- Ceiling in black sheet steel painted white with spot lighting
- Mirror with safety markings
- Skirting board and uprights in plasticized sheet steel or stainless steel
- Switch panel housed in a vertical column with option to mount buttons and warning displays
- One or more accesses
- Under cabin screen as per Regulation EN 81.2
- Cabin ventilation

## KABINE “PRIMAVERA”

- Wände und Türen aus tragendem kunststoffbeschichtetem Blech
- Fester Boden mit Gummi- oder Linoleumverkleidung
- Weißlackiertes Dach aus Schwarzblech mit Spot-Beleuchtung
- Markierter Spiegel
- Sockel und Träger aus kunststoffbeschichtetem Blech oder Inoxstahl
- Tastenfeld mit vertikaler Säule ausgelegt für Druckknöpfe und Signalisierungen
- Einer oder mehrere Zugänge
- Schürze unter dem Kabinenzugang (nach EN 81.2)
- Kabinenbelüftung

- TIPO MARGHERITA:  
pareti e zoccolatura in lamiera plastificata (stesso colore)
- TIPO TULIPANO:  
pareti e zoccolatura in lamiera plastificata (di colore diverso)
- TIPO VIOLETTA:  
zoccolatura in acciaio lucido o satinato o scotch bright



**NUOVACABILIFT**

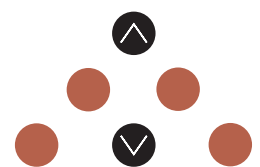
<costruzione cabine per ascensori>

NUOVA CABI LIFT - via Dell'Artigianato 13 - 47838 Riccione  
tel +39 0541 600341 - fax +39 0541 695704 - www.nuovacabilift.com





**CABINA MODELLO WAVE**



## CABINA "WAVE"

- Pareti e ante in lamiera plastificata con inserto tutta altezza
- Fondo fisso rivestito in gomma o linoleum
- Tetto in lamiera nera verniciato bianco con illuminazione a onda
- Specchio marchiato
- Pulsantiera sagomata predisposta per pulsanti di segnalazione
- Uno o più accessi
- Grembiule sotto accesso cabina (a norma EN 81.2)
- Areazione cabina

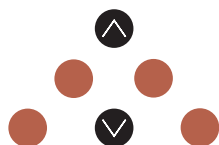
## "WAVE" CABIN

- Cabin linings and doors in plasticized sheet steel with full height inserts
- Flooring covered in rubber and linoleum
- Ceiling in black sheet steel painted white with Wavy type lighting
- Mirror with safety markings
- Skirting board and uprights in chrome steel, satin or scotch bright finish
- Moulded switch panel with option to mount buttons and warning displays
- One or more accesses
- Under cabin screen as per Regulation EN 81.2
- Cabin ventilation

## KABINE "WAVE"

- Wände und Türen aus kunststoffbeschichtetem Blech mit Einsatz auf ganzer Höhe
- Fester Boden mit Gummi- oder Linoleumverkleidung
- Weißlackiertes Dach aus Schwarzblech mit Wellen-Beleuchtung
- Markierter Spiegel
- Profiliertes Tastenfeld ausgelegt für Signalknöpfe
- Einer oder mehrere Zugänge
- Schürze unter dem Kabinenzugang (nach EN 81.2)
- Kabinenbelüftung

- TIPO ARTIC: pareti e inserto in lamiera plastificata
- TIPO INDIAN: pareti in lamiera plastificata con inserto in lamiera plastificata lucida
- TIPO PACIFIC: pareti in lamiera plastificata con inserto in laminato plastico
- TIPO ATLANTIC: pareti in lamiera plastificata lucida con inserto in laminato plastico



**NUOVACABILIFT**

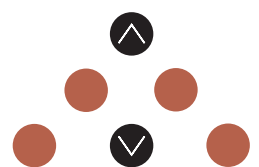
<costruzione cabine per ascensori>

**NUOVA CABI LIFT** - via Dell'Artigianato 13 - 47838 Riccione  
tel +39 0541 600341 - fax +39 0541 695704 - [www.nuovacabilift.com](http://www.nuovacabilift.com)





**CABINA MODELLO MONTACARICO**



## CABINA MONTACARICO

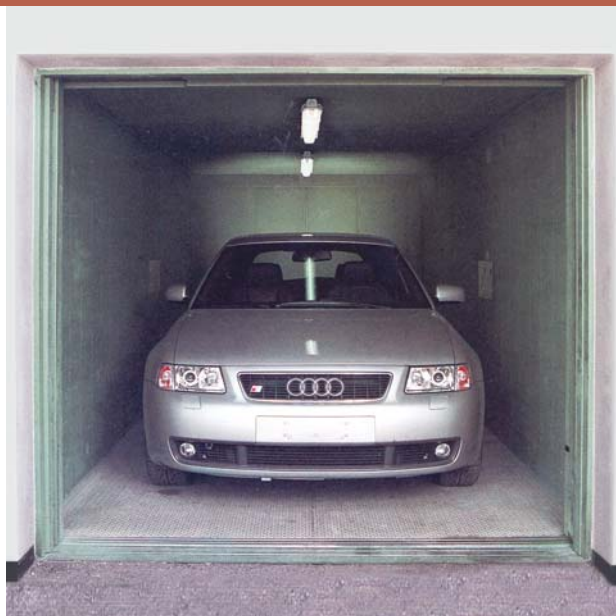
- Pareti a pannelli in lamiera nera verniciati r.a.l. o lamiera plastificata
- Fondo fisso in lamiera mandorlata
- Tetto in lamiera nera verniciato con illuminazione con plafoniera tipo grigliato completo di neon
- Uno o più accessi
- Predisposizione alloggio fotocellula
- Predisposizione quadro pulsantiera
- Prembiule sotto accesso cabina ( a norma en 81.2 )
- Areazione cabina

## GOODS LIFT

- Linings in sheet steel painted black r.a.l or plasticized
- Fixed floor in sheet steel with an anti slip surface
- Ceiling in sheet steel painted black with grille type ceiling lamp complete with neon
- One or more accesses
- Photocell option
- Switch panel option
- Under cabin screen as per Regulation EN 81.2
- Cabin ventilation

## KABINE DES LASTENAUFZUGS

- Wände aus lackierten Schwarzblechplatten oder kunststoffbeschichtetem Blech
- Fester Boden aus Riffelblech
- Dach aus lackiertem Schwarzblech mit Deckenbeleuchtung des Typs mit Gitterrost und Neonleuchte
- Einer oder mehrere Zugänge
- Auslegung für Fotozelle
- Auslegung für Tastenfeld
- Schürze unter dem Kabinenzugang (entsprechend EN 81.2 )
- Kabinenbelüftung



• TIPO AZIENDALE:  
pareti a pannelli in lamiera nera verniciata r.a.l.

• TIPO COMMERCIALE:  
pareti a pannelli in lamiera plastificata



NUOVA CABI LIFT - via Dell'Artigianato 13 - 47838 Riccione  
tel +39 0541 600341 - fax +39 0541 695704 - www.nuovacabilift.com